



101 MAIN STREET
HASLET, TX 76052
(817)439-5931
WWW.HASLET.ORG



Know what's below.
Call before you dig.
@least 48 hours prior

CITY OF HASLET
CONSTRUCTION STANDARDS
SANITARY SEWER
CLEANOUTS AND SERVICE
CONNECTIONS

CERTIFICATION:
THIS CITY OF HASLET SHEET IS AUTHORIZED FOR USE ON THIS PROJECT BY AUTHORITY OF THE CITY ENGINEER. BY INCLUDING THIS SHEET IN THE CONSTRUCTION SET OF DRAWINGS, THE ENGINEER OF RECORD FOR THE PROJECT IS ALSO CERTIFYING THAT THE CONTENT OF THE DETAILS AND NOTES HAVE NOT BEEN ALTERED FROM THAT RECEIVED FROM THE CITY OF HASLET.

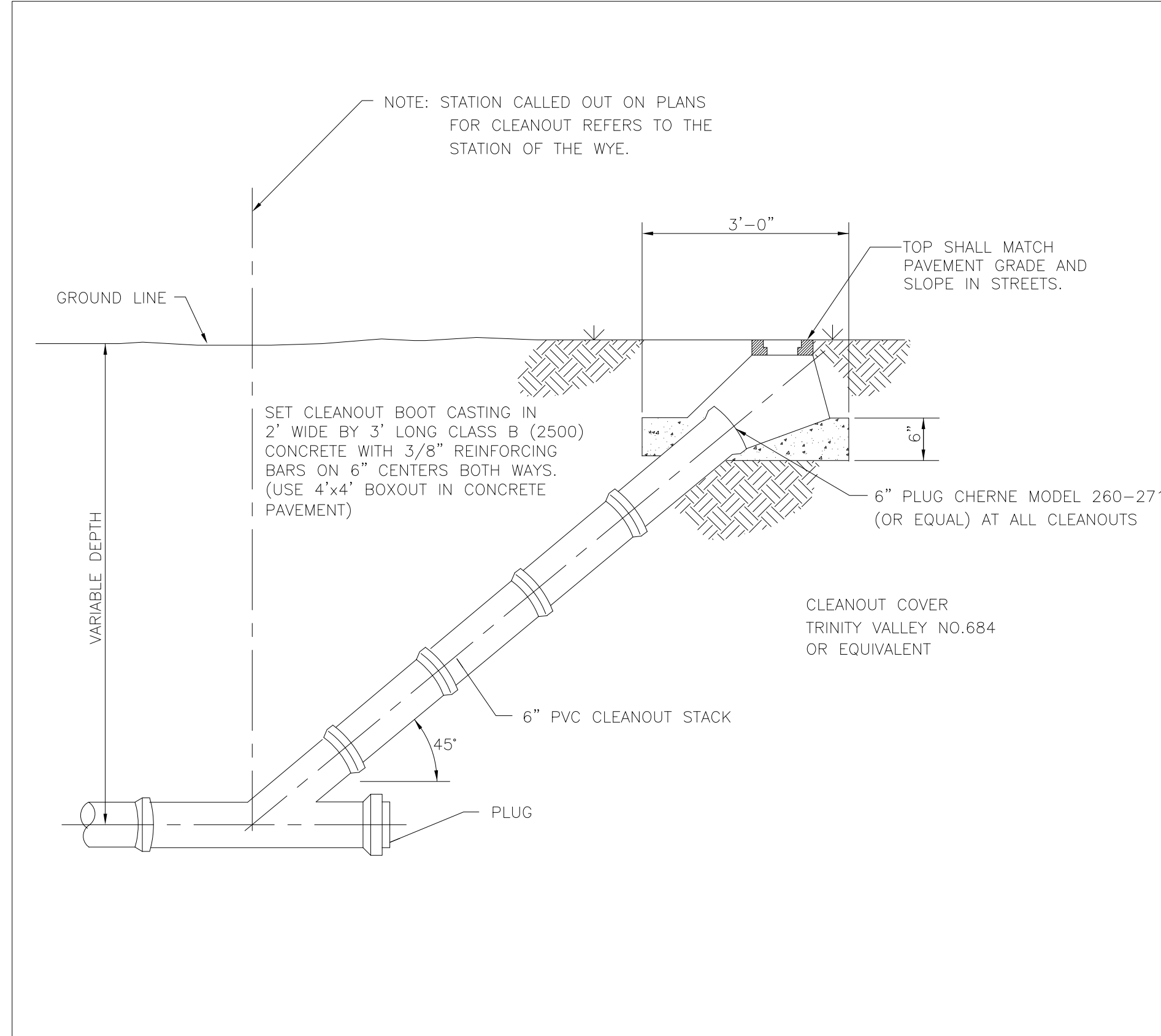
DRAWN: CAD

APPROVED: TNA

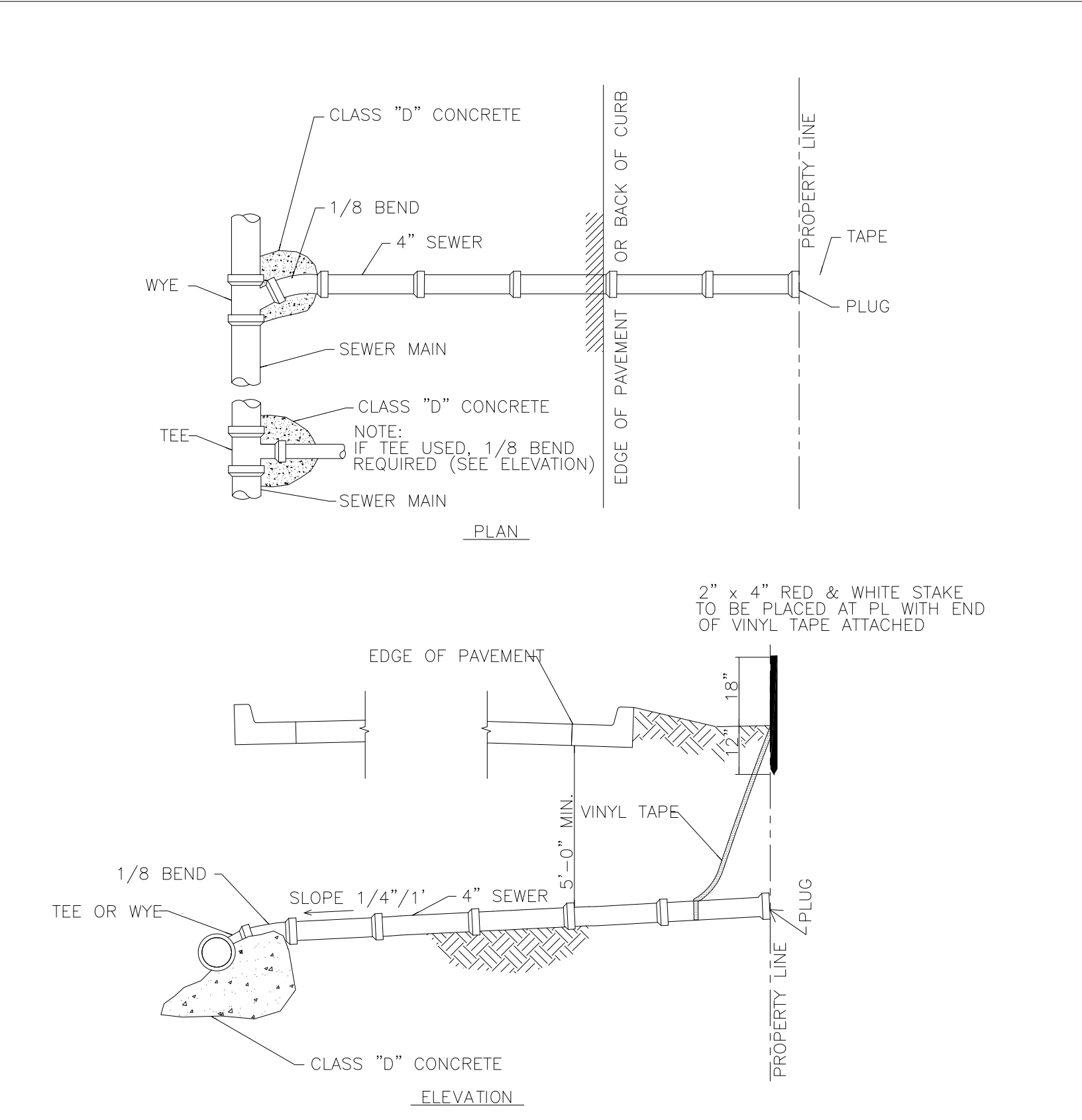
DATE: DEC. 2016

SHEET NUMBER

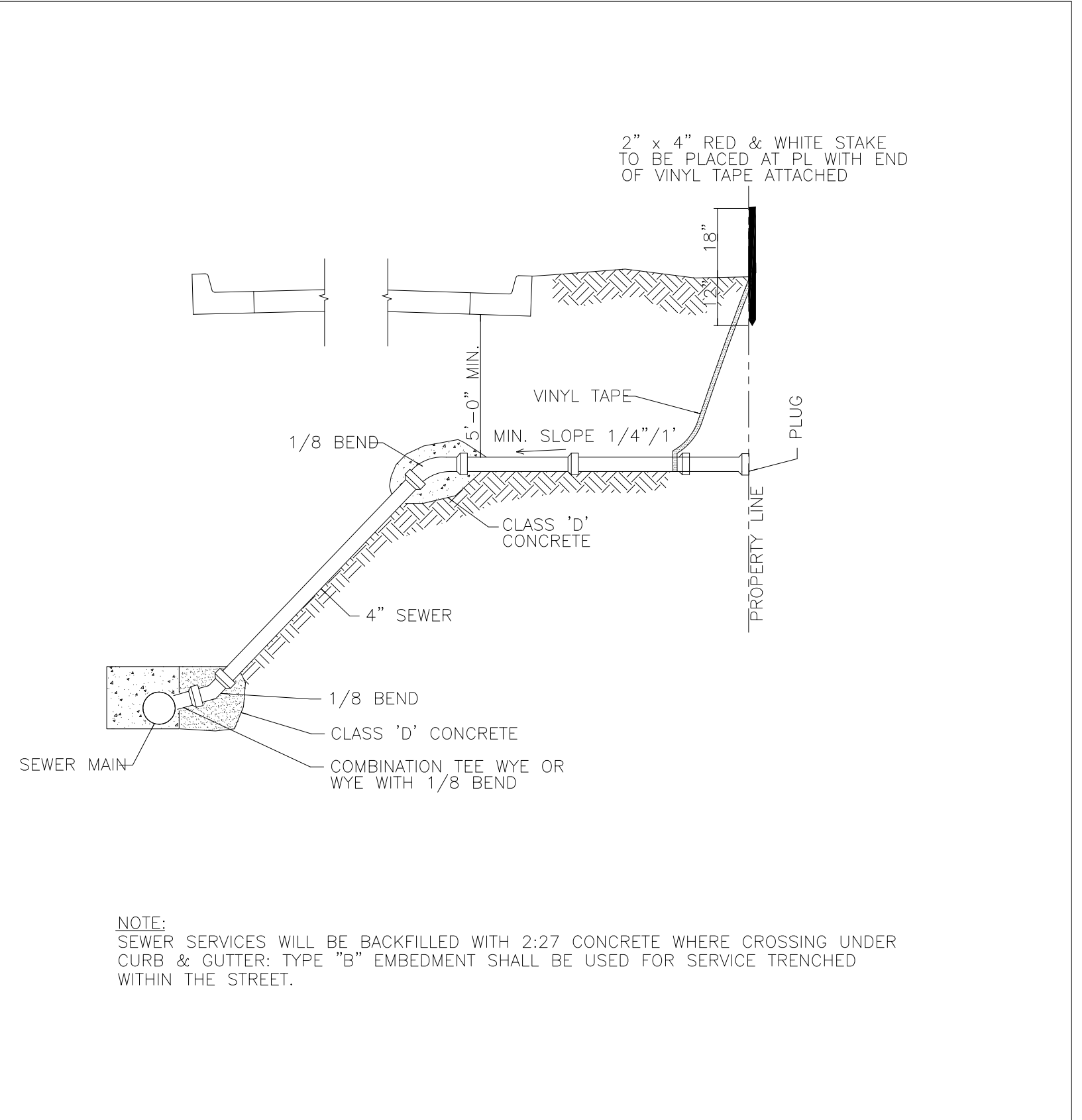
SS2



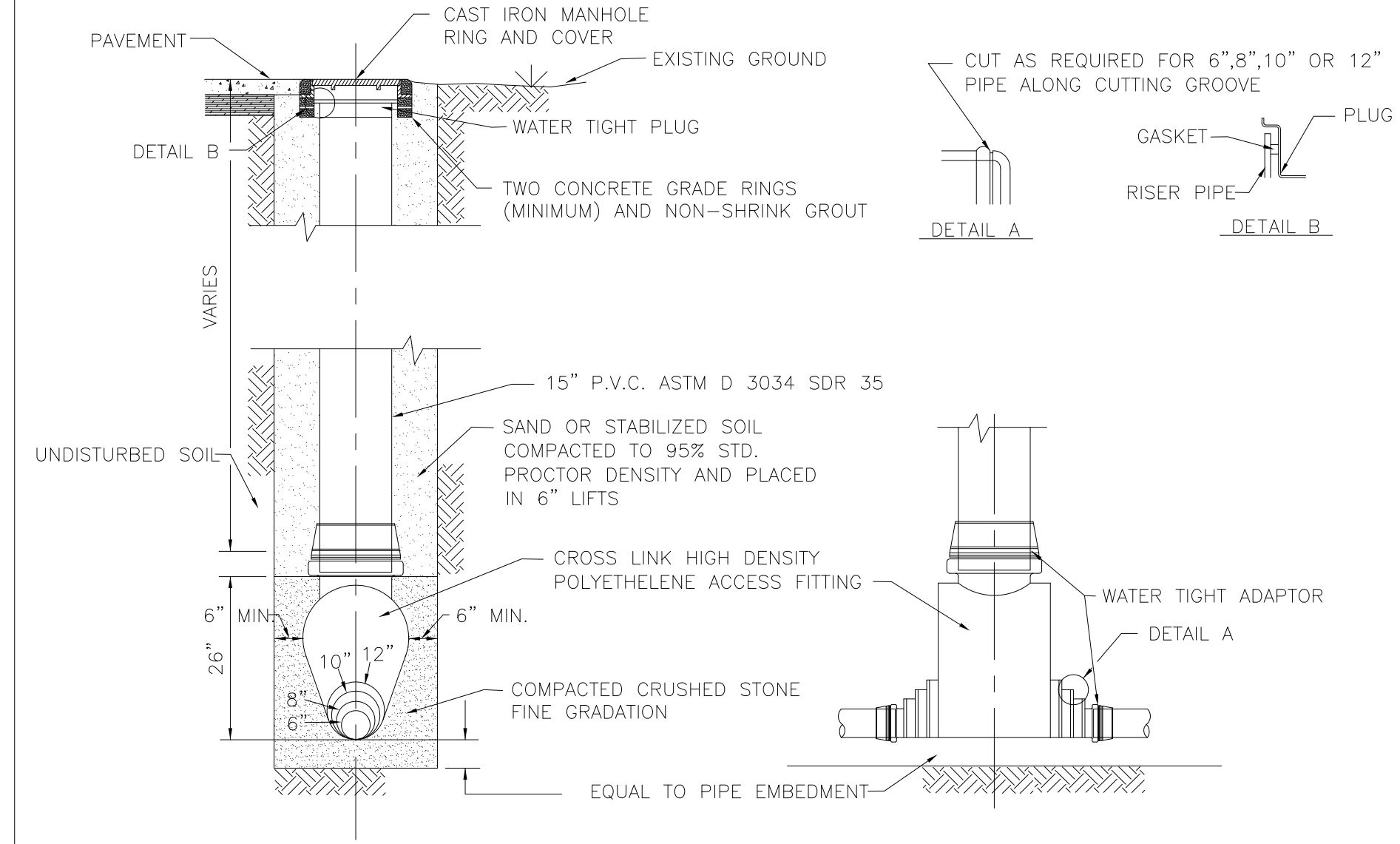
SS8 SANITARY SEWER CLEANOUT
WHERE SEWER MAIN IS LESS THAN 8' IN DEPTH



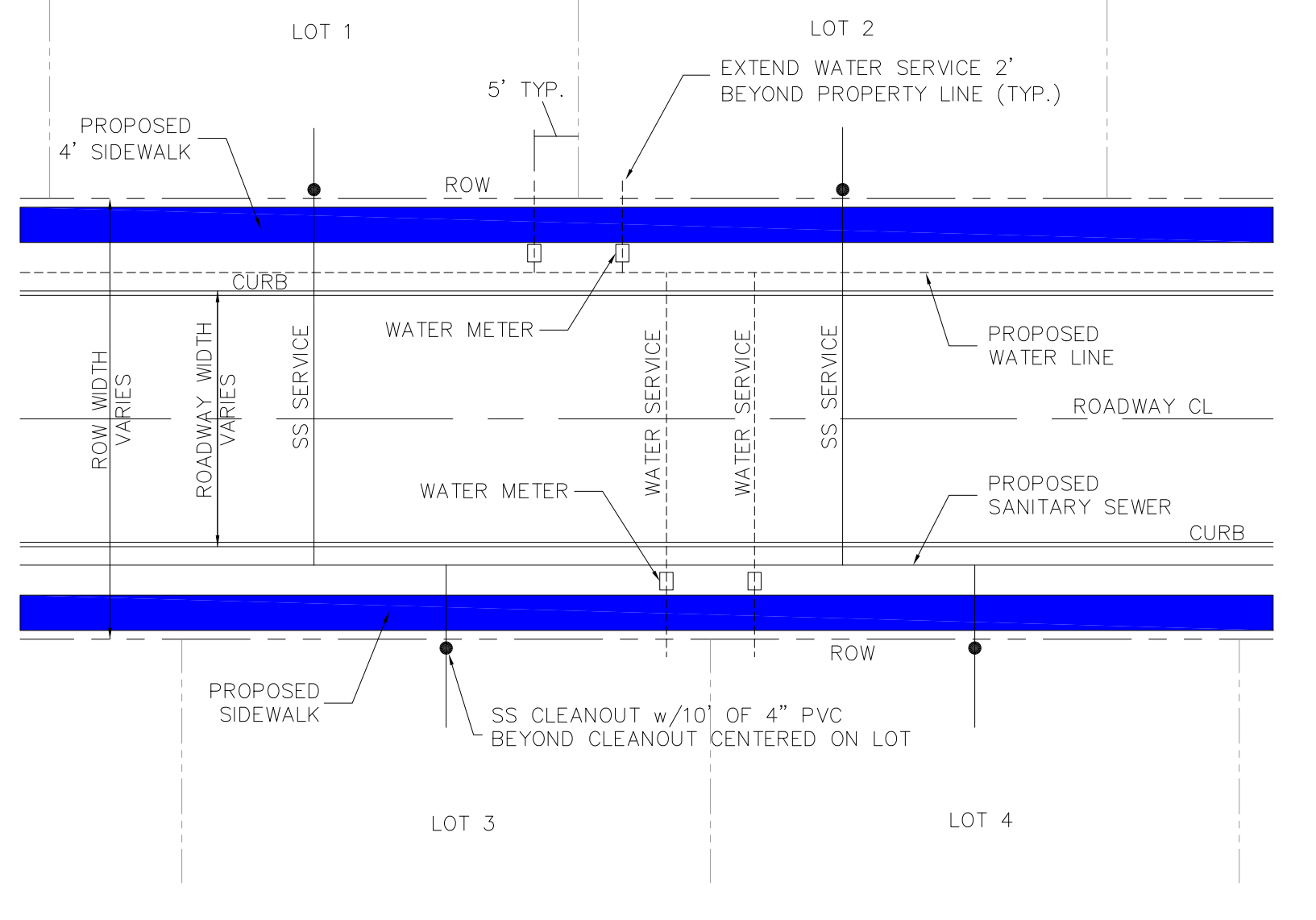
SS9 STANDARD SEWER SERVICE CONNECTION
WHERE SEWER MAIN IS LESS THAN 8' IN DEPTH



SS10 DEEP SEWER SERVICE CONNECTION
WHERE SEWER MAIN EXCEEDS 8' FLOWLINE DEPTH



SS11 SANITARY SEWER ALTERNATE CLEANOUT
LOCATION MUST BE APPROVED BY CITY



SS12 TYP. SEWER AND WATER SERVICE CONNECTION DETAIL
LOCATION TO BE VERIFIED BY PUBLIC WORKS PRIOR TO INSTALLATION

SEWER SERVICE NOTES:

1. ALL SEWER SERVICE LINES SHALL BE MIN. 4" IN DIAMETER.
2. WHEN SEWER SERVICE LINE ROADWAY CROSSING IS MADE BY BORING, THE UPPER VERTICAL BEND SHALL BE ELIMINATED. THE BORE PORTION OF THE ROADWAY CROSSING SHALL BE SET AT A MINIMUM 2% GRADE.
3. USE SAME DETAIL FOR ALL SIZE SEWER SERVICES. VARY LOCATIONS SHOWN TO FIT FIELD CONDITIONS. IN AREAS WHERE CONSTRUCTION CONDITIONS VARY FROM THOSE SHOWN, ADJUST LOCATIONS TO CONFORM TO ACTUAL FIELD CONDITIONS.
4. CONCRETE UNDER CURB IS REQUIRED WHERE SERVICE IS INSTALLED BY OPEN CUT UNDER EXISTING CURB.
5. SEWER SERVICE TO BE EXTENDED TO EASEMENT LINE IF EASEMENT IS PRESENT ADJACENT TO PROPERTY LINE.
6. SANITARY SEWER SERVICES SHALL BE MADE WITH AN SDR-35 PVC SERVICE TEE AND SHALL BE LOCATED 10' FROM THE CENTERLINE OF THE LOT NEAREST THE POINT OF THE LOWER SANITARY SEWER MAIN GRADE. LOCATION SHALL BE MARKED "S" STAMPED INTO FRESH CONCRETE OR NEATLY SAWED ON TO THE CURB. SERVICE TAPS ON EXISTING MAINS SHALL BE MADE WITH SDR-35 PVC SADDLE WITH RUBBER RING FASTENED WITH STAINLESS STEEL BANDS.
7. USE ONLY NON-SHEAR COUPLING FOR PIPE CONNECTIONS.
8. LOCATION MARKS FOR SANITARY SEWER SERVICE, WATER SERVICE, WATER VALVES, AND MANHOLES SHALL BE STAMPED INTO FRESH CONCRETE OR NEATLY GROUND ON THE CURB. THE MARKING FOR EACH ARE AS FOLLOWS:

SANITARY SEWER SERVICE - S
WATER SERVICE - W
WATER VALVE - V
MANHOLES - MH